

2016  
JANUARY – FEBRUARY

2015 - 2016

Officers & Directors

**President:**

**Mark Marikos**

**Vice President:**

**Mike Hollonbeck**

**Recording Secretary:**

**Marilyn Reynolds**

**Treasurer:**

**Ellen Alexander**

**Membership Secretary:**

**Alrene Hibben**

**Director:**

**Sara Day**

**Director:**

**Dick Gottfried**

**Director:**

**Jo Anne Sam**

**Past President:**

**Diane Braswell**

**Librarians:**

**Robert & Elaine Royer**

## TUCSON GEM & MINERAL SOCIETY

**Ph.: 520-322-5773**

**Email: [tgms@tgms.org](mailto:tgms@tgms.org)**

ROCK TALK is the official publication and is © 2016 by the Tucson Gem and Mineral Society, Inc. to reproduce material contained herein for non-profit use only. All commercial and other use requires written permission from the Tucson Gem and Mineral Society, Inc.

## EXPLORE DISCOVER SHARE

### President's Page



About this time every year, I become unsettled, almost giddy with excitement – much like a kid anticipating Christmas. But Christmas is already past, and I must admit, it doesn't hold the same kind of excitement that it did when I was young. But as January gets into gear, it's as if I can sense the busy preparations being made by mineral dealers all over the world, as they get ready for Tucson. I imagine that somewhere out there, a dealer is checking his list, and thinking, "Mark's been pretty good this year. Maybe he would really like one of these!" as he carefully wraps a beautiful and unique mineral specimen.

I began collecting minerals when I was about five years old. Growing up in St. Louis, Missouri, our next-door neighbor Lucy had a brother who was a miner in Morenci, Arizona. Every summer, Art and Sally would come to visit Lucy for a couple weeks, and Sally was a mineral collector.

So I was corrupted at a very tender age, and quickly acquired a taste for mineral specimens that were too expensive for my dime-a-week allowance. Not much has changed, though my budget is a bit larger now a-days (although never large enough to keep up.)

As I got older, I forgot about minerals for a few years until my older brother John got into it, through the influence of a family friend. I jumped back into it, and soon, our little brother Ken got into it as well. Mom and Dad figured it was basically harmless (little did they know), and helped support the addiction by taking us to field trips, rocks shows and swaps. They said they were doing it "just for the boys."

Eventually, "just for the boys," they joined the McDonnell-Douglas Gem and Mineral Club, as my dad was an employee of the aircraft manufacturer. A few months later, the club was offering lapidary lessons, so again, "just for the boys," Mom and Dad decided to take the class so they could teach us. They came home from the second lesson with a 12-inch rock saw, a four-station grinding, sanding, and polishing machine, a 16" vibra-lap, and countless supporting supplies; it was downhill from there! With five collectors in the house, we never feared being blown away by a mid-west tornado, but we did worry about forming a new sinkhole.

Through those years, and into my college years (I majored in Geology to help support my addiction), I kept hearing about a mythical event known as "The Tucson Show," and would often fall asleep as visions of millerites danced in my head. A dealer from northern Illinois (Dave Crawford) would stop to visit friends in Rolla, on his way to Tucson, and we would have a mini-show in Art Hebrank's or Larry Nuelle's living room. Seeing the specimens that Dave had already sold, and would be delivering to their new owners in Tucson, only increased the wanderlust.

Fast-forward to 1991, my new wife and I moved to Tucson for me to continue graduate school in Geosciences. I had finally arrived in the promised land, in January, no less. But alas, I was a starving grad student, and didn't have the money to feed my habit. I felt like the third world child, peeking longingly with big brown eyes, through the window of a fancy restaurant, as rich tourists dined on epicurean pleasures I could only imagine. Occasionally some compassionate soul would offer a scrap of leftovers, which would be gratefully accepted and cherished. And it was enough to keep me from becoming disillusioned – enough to keep my appetite whetted for more.

I worked a couple shows for dealers, and both times took a significant portion of my earnings home in a box. And the excitement of being in the middle of the show, getting to handle specimens that would end up in the collections of museums and famous collectors kept the dream going.

I now have a decent collection, but still have tastes that far exceed my resources – but it's OK. Somehow being involved with TGMS and the Show gives me enough exposure to keep the withdrawal symptoms away, and the extra pleasure of interacting with the great people who put on this mythical event fills the void.

Thank you all for all you do to make TGMS a great organization, and all you do to make the Tucson Gem and Mineral Show® the best in the world!

Sincerely,

Mark Marikos

([president@tgms.org](mailto:president@tgms.org))

## TGMS General Meeting – November 2, 2015

The General Meeting of the Tucson Gem and Mineral Society was called to order by President Mark Marikos at 7:30 p.m. Visitors and new members were recognized and welcomed to the meeting.

**PROGRAM:** Brad Ross PhD., PE is a Registered Professional Mining Engineer whose career took him and his family to Namibia for 3 ½ years. After moving to Tucson in 2015, he started an independent consulting company and teaches a graduate level class on Engineering Sustainable Development at the U of A. His topic was “Namibian Artisanal Mining” which occurs primarily in the Erongo Region, an area with less than 200 milliliters of rain per year. Most of the mining in this area is for collector minerals and semi-precious gemstones including quartz, fluorite, topaz, aquamarine, black tourmaline and blue or rainbow tourmaline. Miners usually work with a hammer and chisel on hard rock digging a hole that may be ten feet deep or so. They live in makeshift homes without running water, sanitation facilities or electricity. Food is scarce. Buyers are few in the remote areas when the mining occurs so income is barely enough to sustain the miners and their families. Wonderful specimens come out of the area.

**BREAK:** Kerry Towe provided a Thanksgiving feast with all the delicious fixings. Thank you Kerry!

### OLD BUSINESS:

**Approval of Minutes** for September 14, 2015 and October 5, 2015 General Meetings as published in Rock Talk.

**MOTION:** To approve minutes. Seconded and passed.

**Field Trips:** Jerry Glazman announced that the Sunday, November 8 trip to St. David for selenite roses attendees will meet at Reb's Restaurant in Benson at 9:00 a.m. and will leave there at 9:30 a.m. Any car is okay and garden tools are adequate. The selenite is in a sand layer and will be fragile if there has been rain. Kerry Towe announced that due to serious illness of the owner, the December 12 trip to Red Cloud may be postponed to March and switched with the trip to Spectrum & Prism Mines. He reported that the October 31 trip to Round Mountain yielded great material. Sign-up sheets for field trips are in the front room.

**Rock Swap & Potluck:** Saturday, November 7 from 2:00 p.m. to 6:00 p.m. at TGMS. The OPLC auction starts at approximately 9:30 a.m. and members are encouraged to attend both events.

**Mineral, Fossil, Jewelry, Art & Craft Sale:** December 5, 9:00 a.m. to 5:00 p.m. All tables inside are full and there will be five TGMS members outside. Flyers are available for anyone to take to work, church, etc.

**Firefighter's Christmas Toy Drive:** Unwrapped toys may be dropped off in the designated box through the December 2 General Meeting.

**Food Bank Drive:** There will be a box available through the December 2 General Meeting for donated nonperishable food items.

**Educational Class:** Tuesday, November 3 from 7:00 p.m. to 8:30 p.m. at TGMS. Bill Shelton's topic will be “Four Favorites and Their Crystal Data – Garnet, Topaz, Beryl and Zircon.”

### NEW BUSINESS:

**Get Well Card** for Tony Jones is in the front room. Please sign it.

**New Spotlight Cases:** There are sponsors for six cases already which replace funds being pulled from another budget item.

**Science City:** TGMS's application was approved to participate. We will have minerals displayed for people to test them and learn their properties. Then they can try to match the minerals to their uses. The event is March 12-13, 2016 from 10:00 a.m. to 5:00 p.m. Volunteers will be needed. There is a sign-up sheet in the front room.

**Training for Display Setup:** Les Presmyk has volunteered to teach anyone interested in setting up a competitive exhibit or other exhibit. It would be November 16, 17 or 18. If interested, see Pat.

**TGMS Christmas Party:** December 16, at TGMS. Social hour starts at 6:00 p.m., catered dinner at 6:30 p.m. and entertainment by Melody Louise at 7:30 p.m. Cost is \$5.00 for TGMS members and \$10.00 for invited guests. Deadline for sign-up is December 11 or reservations may be made by calling 520-322-5773 or emailing tgms@tgms.org.

**DRAWING FOR DOOR PRIZES:** Kerry Towe, as meeting host, made the first choice. Drawing winners were Bette Powell, Bill Shepherd, Diane Braswell, Herb Ross, Bob Melzer, Denis Menard, Chuck Stevenson, Jo Anne Sam and Mary Ann Penkova.

The meeting was adjourned at 9:05 p.m.

Respectfully submitted,  
Marilyn Reynolds, Recording Secretary

## TGMS General Meeting — December 7, 2015

The General Meeting of the Tucson Gem and Mineral Society was called to order by President Mark Marikos at 7:30 p.m. Visitors and new members were recognized and welcomed to the meeting.

**PROGRAM:** Dr. Peter K. M. Megaw presented “A Tale of Four Mineral and Gem Shows: Tucson, Munich, St. Marie and Hunan.” These are the world’s four major mineral shows with Tucson at the top. The TGMS Show started in 1954, Munich in 1963, St. Marie in 1966 and Hunan 3 years ago. The TGMS Show is the only non-profit run by volunteers. Munich and Hunan are run by commercial organizers. St. Marie originally was by a commercial organizer, but is now run by the town. Tucson has other shows in hotels, tents, parking lots, etc. in addition to the TGMS Show, with 4000 dealers drawing an attendance of 75,000 to 100,000 people with 25,000 for the TGMS Show. The Munich show is in four buildings with 1250 dealers and an attendance of 40,000. The St. Marie show is mainly in tents along the streets with high end dealers indoors, 950 dealers and an attendance of 15,000. The Hunan show was Changsha in a large, three story building with 1100 dealers and an attendance of 300,000 to 500,000 encouraged by the government to attend. Future shows will be in Chenzhou, also in Hunan Province. Hunan speakers are all academicians and academic credentials are needed to attend the lectures, whereas in Tucson, lectures are open to anyone. TGMS’s Jr. Ed program far outweighs the other shows. Who wins? We all do! There is a strong and growing international mineral community; the major shows are well distributed in time and space; new gem and mineral specimens are introduced.

**BREAK:** Ortrud Schuh provided the refreshments including fruit, cheese, vegetables, tuna salad, meat balls and cookies. Many thanks!

### OLD BUSINESS:

**Show Chairs:** Rick Trapp, Mineral Chair, explained his duties being in charge of the mineral dealers and said volunteers are needed during dealer move-in Wednesday before the Show and at the end of the Show on Sunday for dealer move-out. Ellen Alexander is in charge of docents for the Show who help visitors by answering questions, talking about the exhibits and explaining that the Show is put on by a club that they can join. Volunteer sign-up sheets are in the front room.

**Science City:** Mark Marikos needs a set volunteer list as soon as possible to turn in so volunteers will get their T-shirts and parking passes. Sign up in the front room.

**Field Trips:** Merritt Simmons reported that the Blanchard Mine trip was amazing. There were many kinds of specimens, unlimited collecting and very friendly, helpful people. A \$10.00 membership in the Albuquerque Club is required to go on the field trip, Kerry Towe announced that the Red Cloud trip will be in March. Sign-up will be at the January meeting for Silverbell, Mission and Red Cloud trips.

**Christmas Party:** December 16<sup>th</sup> is \$5.00 for members and \$10.00 for guests. The last day to sign up is December 11<sup>th</sup>.

**Firefighters Toy Drive and Community Food Bank:** Take contributions to the office this week.

### NEW BUSINESS:

**Competitive Exhibits:** Gloria Quigg showed and discussed a Power Point presentation put together by Les Presmyk explaining the categories for Competitive Exhibits and the trophies that are awarded. The information can be found on the TGMS website [www.tgms.org](http://www.tgms.org).

**February Meeting: MOTION:** To put February meeting on the first Monday in February. Seconded and approved. The Board will move to change the By-Laws to agree with the change.

**DRAWING FOR DOOR PRIZES:** Ortrud Schuh, as meeting host, made the first choice. Drawing winners were Wolfgang Mueller, Deborah Alderman, Jerry Foley, Brad Ross, Janette Simister, Denis Menard, Marie Gutierrez, Elaine Royer, Noah Trujillo and Robert Niedermeier.

The meeting was adjourned at 9:35 p.m.

Respectfully submitted,  
Marilyn Reynolds, Recording Secretary

## 2016 Tucson Gem and Mineral Show®



Now that the hustle and bustle of Christmas and New Year's has past we are turning our sights toward the 2016 Show and it looks like we're going to have another great Show. With a theme of "Shades of Blue: Minerals of the World" you can expect to see blue gems and minerals in just about every shade imaginable. Along with the gems and minerals you'll see blue everywhere in the Arena and X-Hall. With blue umbrellas, and blue skirts around TGMS tables we're really having fun with this theme and you might even hear a little blues music on Friday evening.

As we look forward to the many exhibits, seeing all of our great dealers returning, the Micromount Symposium, Junior Education with SESS, and the many lectures that will be going on all weekend I want to take a moment to thank everyone who has worked all year and those who will work during the Show for their time and support. This Show would not happen without you.

*Gloria Fuggi*

## 2016 TGMS Lecture Series ... a few more to wet your appetite

Friday, February 12<sup>th</sup> — **Crystal Ballroom**

2:00 pm – 3:00 pm (CB)

"Minerals of Georgia"

By Jose Santamaria, Robert Cook & Julian Gray

3:30 pm – 5:00 pm (CB)

Geo-Literary Society Meeting & Speaker

"Rediscovering the Chivor Emerald Mine: In the Footsteps of Peter W. Rainier"

By Robert Weldon

Saturday, February 13<sup>th</sup> — **Turquoise Ballroom**

11:00 am – 12 noon (TB)

"Milpillas Azurite; Locality and Specimens"

By Evan Jones

12:30 pm – 1:30 pm (TB)

"The Jewels in Connemara's Crown: a Beginners Guide to the Gemstones of Western Ireland"

By Prof. Martin Feely & Dr. Alessandra Costanzo

2:00 pm – 3:00 pm (TB)

"Bisbee Blue"

By Richard (Dick) Graeme

### REMINDER:

The February TGMS General Meeting will be held on Monday, February 1, 2016. Our guest speaker will be Mr. Gene Meieran. Mark your calendars!



**December 5, 2015 - Mineral, Fossil, Jewelry Art & Craft Sale**



It is hard to believe that this was the 12th year for this TGMS sale! We had more TGMS members participate than we have ever had ... we actually ran out of space inside the building, so we had several folks outside in the parking lot.

There was a good steady crowd of people coming through and I hope they were buying (I did!!!) The most important part of this sale is the social aspect. TGMS members come together and we talk about everything and get to know each other better. It was a FUN day!!

In 2016 the date will be December 3rd ... mark your calendars for the 13th Mineral, Fossil, Jewelry, Art & Crafts Sale!

By P.R.McClain





## December 16, 2015 TGMS Christmas Party



Great food, great entertainment, great company and we all had a really great time!

Thank you to everyone who helped us set up and a special "Thank you" to our Christmas elves, Barb Elliott & Victoria Fila!

And Mark, you were a great "Santa!"

## TGMS Board Meeting — July 14, 2015

**Present:** Diane Braswell, Sara Day, Dick Gottfried, Alrene Hibben, Michael Hollonbeck, Mark Marikos, and Marilyn Reynolds.

**Absent:** Ellen Alexander and Jo Anne Sam.

**Staff:** Pat McClain and Rose Marques.

The Board Meeting was called to order by President Mark Marikos at 6:30 p.m. in the TGMS Conference Room.

**Minutes Approval** of the April 11, 2015 Board Meeting: **MOTION:** To approve the minutes as written. Seconded and approved.

**Treasurer's Report:** No report.

### **Old Business:**

**Plan of Transition:** The Board discussed planning for transition in the following areas: When a full time employee decides to retire from either position (Executive Manager, Executive Assistant) they will be asked to remain as a part-time time employee to train the new full-time employee for a defined transition period. If the need arises to replace the Society Treasurer, the position should be filled by a TGMS member with CPA training and, if no such member is available and willing, the Society should hire a CPA to work with the elected Treasurer. There was consensus that the Society Treasurer needs to continue as Show treasurer.

**Salary vs hourly wage of the Executive Manager's position:** Per the Department of Labor requirements, the Society's Executive Manger does not meet the requirements for a salaried position. Explanation is needed on work vs volunteer hours for staff that are Society members.

**Other Old Business:** None.

### **New Business:**

#### Discussion of "Quorum" related to the Show Committee:

The Show Committee requested approval or disapproval of the newly defined "quorum" for Show Committee meetings that was established by the Show Committee. Discussion ensued. **MOTION:** That the Show Committee quorum be seven. Seconded. Not passed. Society Bylaws specify that committees be run by Roberts Rules of Order. **MOTION:** Quorum to be one half of the active members on the Show Committee plus one. Seconded and approved.

#### Society Raffle:

A ring was donated by a dealer to be used at the 2016 TGMS Show as the 2016 Grand Prize Giveaway. The Giveaway Booth Co-Chairs already had the 2016 Grand Prize Giveaway. A raffle was then suggested, funds designated for scholarship fund. Per State law, a raffle is considered gambling and requires plans for a raffle be submitted and approved by the AZ State Attorneys Office. It was suggested that the ring be used at the "Live Auction," and a letter be sent to the donor of the ring indicating the change in use of the donation. **MOTION:** To not have a raffle due to legal constraints and instead offer the ring for the live auction, proceeds to go to the scholarship fund. Seconded and passed.

**MOTION:** To recommend to Show Dealer Chairs to start contacting 2016 Show Dealers ASAP for donations for the Saturday night live auction. Seconded and approved. Donations to be sent to the office or send pictures early for publicizing on the website.

**Society Assets & Society Policy issue:** Assets belong to the Society and will be under the control of the Society. A new lock will be used on storage shed #1. During the Show an alternate lock will be used for the U. of A. earth sciences advisor and students to obtain material for the Jr. Ed. Program. Items of higher value will be kept in the office. A suggestion was made to clear all unnecessary inventory from the storage sheds. Items will be advertised and placed for sale.

#### Other New Business:

Show Vice-Chair position: **MOTION:** To approve Les Presmyk as Vice-Chair. Seconded and not approved. **MOTION:** To not create a Vice-Chair position on the Show Committee. Seconded and approved. The Show Chair can appoint a representative without creating a position.

Building Video Library: New videos have been produced about the Show to be use in interviews, presentations, community outreach and on the website.

Recommendation from Show Committee – To allocate funds to produce one new design prototype case to replace the 6 ft. "fish bowl" cases: **MOTION:** To allocate \$3000 to construct one case. Seconded and approved.

**Call to the Audience:** No guests present.

Meeting was adjourned at 9:15 p.m.

Respectfully submitted by  
Marilyn V. Reynolds, Recording Secretary



## ELEMENT WORD SEARCH ... Reprinted from ESM December Newsletter

### ELEMENT WORD SEARCH

Q X C M U I D N A C S Y C J K O I Q H H H U T J U  
 O P H A W K B C Z U I P O T A S S I U M P K H A V  
 E T T N U P D B E J S S G B Q L N E L Z A Y F M D  
 I L G G D J A G N H D H K A J D B O M E A L Q M I  
 E B B A N X E G I D I O C T T U I C R G K G S C H  
 Q E V N K O L G R J O D A A U V X K O I F C O R W  
 M A S E O T C A O O B E H Q L N V T U D E B I W Z  
 U V I S E D B I U D X A C W A C G L D N A T R N B  
 I R L E O W A X L F Y A O F G U I S L L R E Z O J  
 S V V U J Q C R F I P T T I Y R T U T D O K R O A  
 E Q E G I H D D U E S O D I U M T I M E C O I X F  
 N G R S C I N E S R A D V Y U I B Z T H N A N H O  
 G W F G V R A D N W C A P M M J G S G A W I X Z V  
 A C O L K M E O F U T D A A U B L P O W N J C P J  
 M L S K F H G P R I T Z N A K I A U M E C I X I Z  
 D V Y J F R A H U V K H Z C C S D C T W R K U J J  
 X E V E A Z M W V P M K W M Z M U O H B W H O M V  
 F Z U Z P C O P P E R X F T J U W E H R I V H S F  
 S E E C M U I H T I L F R Z Y T I S I R O T M E P  
 K H Y D R O G E N P A D K C T H K R Z H U M S I A  
 L Z V I Z M D C G D Y R U C R E M I S N E J I A W  
 A C J H P W Y I L A L S N A Y Z R I H S Q L P U Y  
 U H D V Y H Y F J U S F L P M F P B S N X L I E M  
 Y Q H P Y O F H H X F Z D N N I H H U O U D X U J  
 O A C Q E O U G A E A T E N L H J D L Y R X J E M

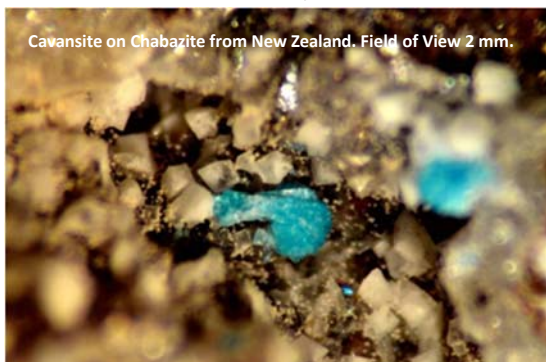
- |           |           |          |          |           |
|-----------|-----------|----------|----------|-----------|
| ARGON     | ARSENIC   | BISMUTH  | BORON    | CALCIUM   |
| CHROMIUM  | COBALT    | COPPER   | FLUORINE | GOLD      |
| HELIUM    | HYDROGEN  | IRON     | LEAD     | LITHIUM   |
| MAGNESIUM | MANGANESE | MERCURY  | NICKEL   | POTASSIUM |
| RADON     | RHODIUM   | SCANDIUM | SILICON  | SILVER    |
| SODIUM    | TITANIUM  | TUNGSTEN |          |           |



## Shoobox Adventures: Who Do You Trust

By Mike Seeds

The shoebox on the end of my bench is not online. There is no Skype. It doesn't even have dial up. When a specimen comes out of the box, there is no one to ask about the mineral or the location. You have to trust the label and indirectly the person who wrote that label. Sometimes you have to think carefully about who you trust.



Cavansite on Chabazite from New Zealand. Field of View 2 mm.

A cavansite on chabazite specimen came out of the shoebox, and it is special for a number of reasons. The cavansite isn't a big showy blue sphere. Beauty can be subtle. There are a few very small cavansite bowties down in a vug, and it is pretty for the contrast between the blue, curving cavansite sprays and the white, sharp-edged chabazite crystals. It's also special because it comes from the North Island of New Zealand and was collected and given to me by Hall of Fame Member Jocelyn Thornton. As it happens, I've never been to the Aranga Quarry on the North Island, but I trust Josilyn completely. It's a pretty specimen and a special gift.

A specimen of wulfenite on calcite

was purchased from a dealer, and the label says Melissa Mine, Muggins Mtns., Yuma County, Arizona. That's a problem because Mindat.org does not list a Melissa mine in Yuma County. In fact, Mindat does not list wulfenite from Yuma county except from the Red Knob Mine, a uranium mine, and it does not provide any images of wulfenite from that mine. Mindat does list a Melissa mine in Park County, Montana, but does not mention wulfenite there.

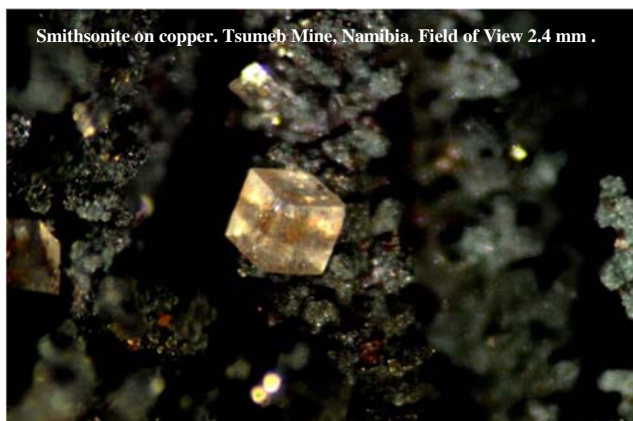
Mindat also lists a Melissa mine in the Trigo Mountains of La Paz County, Arizona – the only other Melissa Mine that Mindat knows about. Could that be where this specimen comes from? Mindat provides quite a few photos of wulfenites from the Melissa mine in the Trigo Mountains, and those wulfenites are octahedral. The wulfenites on the specimen are quite small, but under high power, they are obviously octahedral, and that's unusual enough to make it likely that the location on the label is wrong.



Wulfenite octahedra on calcite from the Melissa Mine. Field of view 7 mm.

The dealer who sold this wulfenite is well known and respected, but dealers must depend on the labels on the specimens they buy. This specimen has been remounted, so the new label comes from the dealer. Was the original label wrong, or did the dealer mix up the location information? Who do you trust? Mindat is very dependable, so it seems safe to relabel the location as La Paz County. But can we be sure?

Micromounter Dave Wells explains the problem. La Paz County, Arizona was created from northern Yuma County in 1983. That, he suggests, means that the specimen was collected before 1983, and the dealer remounted it but just copied information from the old label not knowing about the change. Is Dave's story trustworthy? He says he was visiting his parents in Yuma at the time of the change, so that sounds reliable. He was there. He also points out that for certain mines such as the Red Cloud Mine Mindat.org notes that old labels will say Yuma County.



Smithsonite on copper. Tsumeb Mine, Namibia. Field of View 2.4 mm .

Check out the photo of the little cube from Tsumeb. The label says smithsonite, but can that be right? It looks like a cube. Could it be fluorite? In this case, you have to trust your eyes. That's not a cube. Tip the specimen under the scope and you can see that it is a rhombohedron. It looks like a sharp little cube resting on the dark copper, but there's no cause for alarm. It's not really a cube; it's smithsonite.

Micromounting isn't brain surgery. If we get a label wrong, the patient does not die. It is nice to get the label right, of course. We hope that our collections will survive us and that many years from now someone will look at one of our specimens and feel that they can trust our label. And it's fun to solve mineral puzzles and search for locations and test identifications. But, remember, we do this for fun. Right?

# ROCK TALK

Encouraging the interest and study in geology, mineralogy, lapidary and allied earth science.

FROM:

T.G.M.S.  
P.O. BOX 42588  
TUCSON, ARIZONA 85733



TO:

**Tucson Gem and Mineral Society, Inc.**

P.O. Box 42588  
Tucson, AZ 85733

Phone: 520-322-5773  
Fax: 520-322-6031  
Email: [tgms@tgms.org](mailto:tgms@tgms.org)

Website: [www.tgms.org](http://www.tgms.org)

Facebook: [Tucson Gem and Mineral Society](https://www.facebook.com/TucsonGemandMineralSociety)

Twitter: [@TGMSociety](https://twitter.com/TGMSociety)

YouTube: [TGMS Video](https://www.youtube.com/TGMSVideo)

**PURPOSE:** To encourage interest and study in geology, mineralogy, lapidary, and allied earth sciences.

**Meetings:** Usually the first Monday of the month, starting at 7:30 p.m., except September (second Monday because of the Labor Day holiday), June-August (potlucks). The TGMS facility address is: 3727 East Blackledge Drive, Tucson, Arizona 85716

**The Tucson Gem and Mineral Show ®:**

The second full weekend in February, starting with Thursday.

**Affiliations:** American Federation of Mineralogical Societies, Inc. (AFMS), Rocky Mountain Federation of Mineralogical Societies (RMFMS), Visit Tucson, Tucson Metropolitan Chamber of Commerce (TMCC), Greater Oro Valley Chamber of Commerce

**ROCK TALK** is the official publication and is © 2016 by the **Tucson Gem and Mineral Society, Inc.** To reproduce material contained herein, commercial and other use requires written permission from the Tucson Gem and Mineral Society, Inc.

ROCK TALK Editor: P. R. McClain

ROCK TALK Assistant Editor: R. Marques

ROCK TALK Reporters/Contributors: Mark Ascher, Anna Domitrovic, Peter Megaw, Diane Braswell, Kerry Towe, Donn Cuson, Helen Serras-Herman, Paul Harter, Ellen Alexander, Gloria Quigg