

# ROCK TALK

March - April 2011  
Volume 5, Issue 4

Tucson Gem and Mineral Society, Inc.  
PO Box, 42588, Tucson, Arizona 85733  
Ph: 520-322-5773  
Fax: 520-322-6031  
E-mail: [tgms@tgms.org](mailto:tgms@tgms.org)  
Website: [www.tgms.org](http://www.tgms.org)

## President's Page

The 2011 Tucson Gem and Mineral Show™ is now history. Thanks to so many volunteers, patrons, dealers, ancillary workers and office staff, it was a resounding success. No matter what the stressors are, and there are many, it always seems to come together at just the right time to leave everyone involved tired, but with a sense of satisfaction for a 'job well done" and looking forward to next year. And speaking of "next year," that is really going to be a special Show! Highlighted will be "Minerals of Arizona" in combination with the Arizona Centennial and it will be a state wide celebration that should bring added publicity and attention to our Show. We are already excited about this celebration and making plans for this to be one for the record books.

Now it is time to refresh and renew our enthusiasm and make plans to enjoy the beautiful Tucson spring and perhaps do a little rock hunting and, hopefully, wildflower watching. We have a slight chance this year to see the spectacular wildflowers and take a few pictures and just relax after an intense week. Hopefully there will be a few field trips and opportunities to get out and visit places we have not been to in awhile.

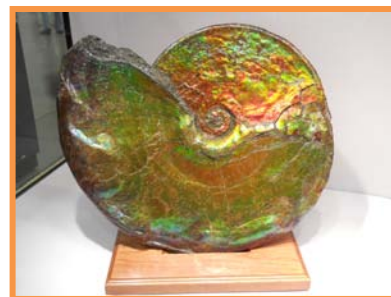
Your Board of Directors has completed the job of revising the By Laws and the Articles of Incorporation. They are being published for your review and your vote will be expected at our next General Meeting. Hopefully, you will see the advantages of the changes in making our Society work for you more efficiently and productively. We have spent a good deal of time reviewing and revising so it will be up to you to decide if our efforts were beneficial.

Thank you all for your support this year and your patience while we made every attempt to make changes and revisions to improve our organization. There is still much to do and we will continue to work for you. It has been a good year and with your help and encouragement we can accomplish even more.

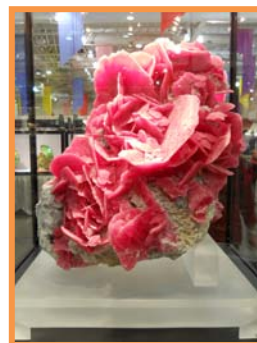
Sincerely,



Diane Braswell  
President



Photos:  
P.R. McClain



## Tucson Gem and Mineral Society, Inc. Officers & Directors

President: Diane Braswell, ph. 520.574.1942  
Vice President: Peter Megaw, ph. 520.529.2231  
Recording Secty.: Marilyn Reynolds, ph. 520.296.0688  
Treasurer: Ellen Alexander, ph. 520.743.9383  
Membership Secty.: Alrene Hibben, ph. 520.529.6502  
Director: Bill Hodgson, ph. 520.575.0731  
Director: Carol Johnston, ph. 520.293.5871  
Director: Ed Schaffer, ph. 888.474.5509  
Past President: Gene Schlepp, ph. 520.325.4534  
Field Trip Chairman: Tom Corson, ph. 520.225.0244  
Librarians: Robert & Elaine Royer

*Encouraging interest and  
study in geology,  
mineralogy, lapidary and  
allied earth sciences.*



ROCK TALK is the official publication and is © 2011 by the Tucson Gem and Mineral Society, Inc. to reproduce material contained herein for non-profit use only. All commercial and other use requires written permission from the Tucson Gem and Mineral Society, Inc.

## GENERAL MEETING JANUARY 3, 2011

The General Meeting of the Tucson Gem and Mineral Society was called to order by President Diane Braswell at 7:35 p.m. Visitors, new members and guests were recognized and welcomed to the meeting.

**ANNOUNCEMENTS:** Penny Savoie, representing the Earth Sciences Department of the Arizona-Sonora Desert Museum, announced that the Mineral Madness Preview will be Thursday, January 20<sup>th</sup> from 5:00 p.m. to 7:00 p.m. in the Baldwin Education Building. There is no admission charge for TGMS members. Please RSVP to Penny at 520-883-3031 so she can plan for adequate refreshments. The public sale will be January 22<sup>nd</sup> and 23<sup>rd</sup>, 9:00 a.m. to 4:00 p.m.

**PROGRAM:** Jim McGlasson, a graduate of the New Mexico Institute of Mining and the Colorado School of Mines, who is a consulting exploration geologist, gave a summation of William Greene's (1851-1911) career. Greene, who appropriated the title of Colonel, though he had no military experience, was active in mining and ranching in Arizona and Sonora, Mexico. He discovered the rich copper deposits in Cananea, Mexico and founded the Greene Consolidated Copper Company in 1899, followed by other companies including the Greene Consolidated Gold Company. Eventually competition and dropping stock prices forced Greene to sell out to Amalgamated Copper. Slides of mineral specimens from the area were shown.

**BREAK:** Refreshments were provided by Pat McClain, Rose Marques, Diane Braswell and Mike Braswell. Many thanks for stepping in and providing a nice variety of finger foods and cakes.

### OLD BUSINESS:

Tom Corson reported on field trips:

- Ogilby, California is cancelled for now until Tom has a chance to make a pre-trip to the area.
- Silverbell Mine on January 15<sup>th</sup> will replace the Ogilby trip.
- The Ruby trip on December 11<sup>th</sup> was very successful. Two more trips are scheduled: January 22<sup>nd</sup> to be led by Dave Witwer and February 26<sup>th</sup> to be led by Mark Candee. These trips are full and there is a waiting list. There will be another trip scheduled for later.
- Bill Hodgson has volunteered to organize an extended trip to Utah in the spring.
- Brazil trip is still not finalized but will be June 11-26. Cost is approximately \$3900 at present, not including airfare. There is a brochure by the sign-up sheet.
- Tom reminded members that they must come early to sign up if they want to get space on the popular trips.

General Meeting, 1.3.11 ..... CONTINUED

Education Class by Bill Shelton: Tuesday, January 4<sup>th</sup>, 7:00 p.m. - 8:30 p.m. will be "Fakes, Frauds and Misrepresentations."

"New Beginnings:" The Society was able to give \$300 to a selected family for Christmas, thanks to member donations. The family was very grateful.

### NEW BUSINESS:

**By-Laws:** Legal Counsel has suggested some changes and additions to the revised By-Laws. When finished, the By-Laws will be sent out to all members to review prior to voting on them which is projected to be at the March meeting.

**DRAWING FOR DOOR PRIZES:** Winners were Priscilla Lockwood Fielding, Janette Simister, Nancy Howard, Vera Schlichter, Dan Schroeder, Harry Henze, Janelle Cortright, Elaine Royer, Kim Filips, Russ Boggs and Phil Babcock.

The meeting was adjourned at 9:15 p.m.

Respectfully submitted,

Marilyn Reynolds, Recording Secretary

**From Rosemary Roberts (reprinted from an email dated 2.25.11):**

*Dear Friends,*

*It is with a sad and heavy heart that I write this e-mail. Yesterday morning my dear friend Roz Pellman passed away from a heart attack and stroke. As you know, she always lit up a room with her smile and infectious laugh. Loving life, she lived it to the fullest and will be greatly missed.*

*Roz cherished her friends both old and new, and therefore I have been asked, along with a few others, to contact all of her mineral friends. I do not have everyone's e-mail address and wanting all to have the opportunity to pay their last respects, I ask that you please pass this e-mail on to those you think she knew in the mineral world.*

*Funeral arrangements are being made at: Green Valley Mortuary 520- 625-7400.*

<http://www.greenvalleymortuary.net/1658493.html>

*The family requests that in lieu of flowers, please send a donation to one of yours or Roz's favorite charities. In recent years, Valley Assistance Services in Green Valley, AZ was one of the charities Roz supported both by donations and doing volunteer work there once a week. Here is their website.*

<http://www.valleyassistanceservices.org/>

*Please feel free to contact me for any other information.*

*Home: (520) 529-4510*

*Cell: (520) 548-1177*

*Sincerely,  
Rosemary*

## GENERAL MEETING FEBRUARY 7, 2011

The General Meeting of the Tucson Gem and Mineral Society was called to order by President Diane Braswell at 7:40 p.m. Visitors, new members and guests were recognized and welcomed to the meeting. These included guests from as far away as Britain and Belgium, here for the 57<sup>th</sup> annual Tucson Gem and Mineral Show <sup>TM</sup>.

**PROGRAM:** Jesse Fisher, a prominent author on California tourmaline localities and frequent contributor to Rocks and Minerals magazine, spoke on "Minerals of the Southern California Pegmatites". He is also a partner in UK Mining Ventures which operates the Rogerley Mine, located in the historic Weardale District, County Durham, England and is known for its green fluorite. The pegmatites range from central Riverside County to northern Baja, with the Pala District in San Diego County being the most productive. Specimens include tourmaline, morganite, kunzite, aquamarine, topaz and spessartine garnet.

**BREAK:** Refreshments were provided by Carole Lee who made a unique variety of finger foods and had signs to identify the delicious treats. Great job, Carole!

**ANNOUNCEMENTS:** The 19<sup>th</sup> "Minerals of Arizona Symposium" will be March 26<sup>th</sup> at the Arizona-Sonora Desert Museum. Per Ray Grant, there will be information and a schedule at the Show and in the newsletter.

**APPROVAL OF MINUTES: MOTION:** To approve the November 1, 2010 and December 6, 2010 General Meeting minutes as published in Rock Talk. Seconded and approved.

### OLD BUSINESS:

Tom Corson reported on field trips:

- The Brazil details are finalized. The cost is \$4500 for 15 days in Brazil, plus airfare. Dates are June 11-26, 2011. Payment is to be made to L.A. Museum. Details are available in a brochure in the back room or in the email sent to members on the interest list.
- There are no other firm trips at present. Trips scheduled to Ruby are cancelled.
- There is a Federation trip to Hampton Butte, Oregon over Memorial Day weekend. Flyers are in the back room.
- Bill Hodgson is working on a trip to Utah. Ideas include a trip to Pala or members can pursue a trip to the Michigan Upper Peninsula in summer, or the Maine Pegmatite Symposium.

General Meeting, 2.7.11 ..... CONTINUED

Members were reminded that admission to the Show is free with your membership card.

**NEW BUSINESS:** No new business.

**DRAWING FOR DOOR PRIZES:** No drawing was held.

The meeting was adjourned at 9:45 p.m.

Respectfully submitted,  
Marilyn Reynolds, Recording Secretary

Boy Scout Troop 447  
Paul Charles, Scoutmaster & Scouts  
835 1 E. Redfield Rd.  
Scottsdale, AZ

February 14, 2011

Patricia McClain  
P.O. Box 42588  
Tucson, AZ 85733

Dear Ms. McClain:

All the members of Boy Scout Troop 447, of Scottsdale, wanted to thank you very much for the tickets to attend the Gem & Mineral show this weekend.

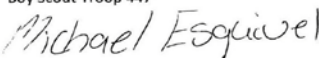
The Scouts have been inspired to learn more about geology, dinosaurs, fossils, product design along with world and US history ... due to your unique show.

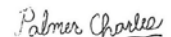
The vendors in the booths were so kind and helpful explaining what they had to offer. In fact, one vendor who had purchased the 52 pound gold nugget asked if the scouts wanted to hold and take pictures of other good size gold nuggets. What a wonderful experience.

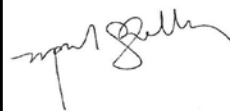
Thank you for making a great memory for all of us!

Warmly,

  
Paul Charles, Scoutmaster & Scouts  
Boy Scout Troop 447









### Our Condolences

Rick Trapp has been a TGMS members since the early '90's ... he has worked tirelessly for the Society and Show for several years. His father and mother often came to Tucson to visit and to enjoy our Show.

A few days after our 2011 TGMS Show concluded, Rick was called back to the home of his parents ... Jack, his father, passed away on February 17, 2011.

On behalf of the Society and Show Committee, we would like to extend our sympathy to Rick and his family.

## Field Trip Update

I hope you all enjoyed the Show! Since my last article, we had the following trips:

### Silverbell Mine

On January 14th, Diane Braswell led a trip to this mine hosted by the mine geologist. It was well attended and all of the participants seemed to find something of interest.



The following trips are currently scheduled. Signup sheets will be available at the upcoming meeting:

### Purple Passion and Midnight Owl Mines

On April 2nd and 3rd, 2011, Dr. Ray Grant will lead a two-day trip to the Wickenburg area to visit three localities - Amethyst Hill, the Purple Passion Mine, and the Midnight Owl Mine. Here are the details:

Part one – Amethyst Hill – meet Saturday, April 2 at McDonalds in Wickenburg at 8:00 AM. This locality has cerussite, quartz, fluorite and other possible minerals.

Part two – Purple Passion mine – meet Saturday, April 2 at McDonalds in Wickenburg at 12 noon. This mine is being worked at present for fluorescent minerals, calcite, fluorite, and willemite. It has produced other minerals such as wulfenite in the past. For the best fluorescent material, each collector will be allowed a few specimens; additional fluorescent material or larger fluorescent pieces will cost \$1.00 per pound. Go to [www.fluorescents.com/index.html](http://www.fluorescents.com/index.html) to see specimens from this location. There is also a possibility of visiting the Monarch Mine for fluorite depending on the road conditions.

Part three – Midnight Owl mine – meet Sunday, April 3 on the Castle Hot Springs road where Trilby Wash crosses the road at 10:00 AM. This is about seven miles from Morristown. The Midnight Owl is a pegmatite and over 90 minerals are reported. It is probably most famous for the fluorescent eucryptite which forms as an alteration of spodumene.

This trip is limited to 30 participants. Four wheel drive is required - no exceptions. There is no fee for the trip. A signup sheet will be available at the March meeting.

### Brazil Trip

Dr. Anthony Kampf of the LA County Museum of Natural History will be leading this trip to Minas Gerais, Brazil which is now finalized for June 11th through the 26th, 2011. Tony has led many such trips over the years and his offer to organize one for our club is a fantastic opportunity for our members. The itinerary looks simply amazing! The cost is \$4500 plus

FIELD TRIP UPDATES ..... CONTINUED

airfare. Those of you on the interest list should have already received the trip brochure via email. Signup and payment is directly through the LA Museum as described in the brochure. Those of you who did not receive a brochure and who are interested in this trip may obtain one by contacting either the office or myself.

### Geodes near Ruby

We had three more trips scheduled to this popular location which I regrettably decided to cancel due to the high amount of border-related violence near the collecting locality. Hopefully, these trips can be re-scheduled when the situation improves.

We are working on several more trips, the details of which will be announced in the coming months:

### Silverbell Mine

Diane is working on another trip to the Silverbell Mine, to be announced when the date has been finalized.

### Utah Trip

One of our goals is to have one extended out-of-state trip per year. Bill Hodgson is working on putting together a collecting trip to Utah for this coming spring. More details will be announced as they become available.

### Cancellations/Refunds

Please note that per club policy, field trip fees are to be paid at the time you sign up and are not refundable, unless the trip is cancelled by the club. Cancellation by the member does not entitle the member to a refund.

### No Shows

On the subject of cancellations, we had a problem on several of our recent trips where people signed up and never showed up or called to cancel. Those trips had a waiting list of members wanting to go who were denied the opportunity to do so by the "no shows". I would ask all of you to exercise common sense and courtesy and contact either the office or the trip leader if you are not going to attend a field trip that you have signed up for. Another way to look at it is: the time that we have to spend deciding how to deal with "no shows" is time we could be spending arranging new collecting opportunities for all of you.

We welcome your comments and suggestions. Feel free to send them to me at [corson@infodyn.com](mailto:corson@infodyn.com)

On behalf of your Field Trip Committee,

Tom Corson  
Chairman

**Nineteenth Minerals of Arizona Symposium  
Saturday March 26, 2011, 8 AM to 5 PM  
Arizona-Sonora Desert Museum  
Baldwin Education Building  
(Follow Symposium Signs)**

Registration fee includes: coffee hour, breaks, lunch, Symposium Proceedings, and Museum admission. Tentative program is included, other activities are planned and registrants will be notified of the final program and any additional events.

**Registration Form:**

Please mail this form with the \$45.00 registration fee (Foundation members pay \$40.00) before March 21, 2011 so lunch and other food can be ordered.

**Mail to:**  
Flagg Mineral Foundation  
P.O. Box 41834  
Mesa, Arizona 85274

**Make checks payable to: Flagg Mineral Foundation**

Enclosed is \$ \_\_\_\_\_ for \_\_\_\_\_ registrations.

**Name(s):** \_\_\_\_\_

**Address:** \_\_\_\_\_  
\_\_\_\_\_

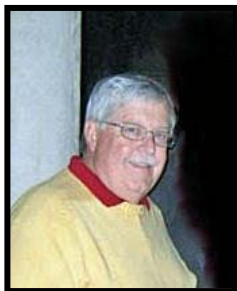
**E-mail:** \_\_\_\_\_

### Symposium Tentative Program

|                 |   |
|-----------------|---|
| 8:00 - 9:00 -   | Coffee Hour   |
| 9:00 - 9:10 -   | Welcoming Remarks and Introductions   |
| 9:10 - 9:40 -   | Mines and Minerals of the Amole District, Tucson Mountains, Pima County - Anna Domitrovic |
| 9:40 - 10:10 -  | Tourmaline from Willow Springs, Pinal County - Barbara Muntyan                            |
| 10:10 - 10:50 - | Break, Mineral Silent Auction   |
| 10:50 - 11:20 - | Minerals of the Evening Star mine - Ron Gibbs   |
| 11:20 - 11:50 - | A snapshot of the mineral collecting history of Arizona - Tony Potucek                    |
| 11:50 - 1:20 -  | Lunch, Mineral Silent Auction   |
| 1:20 - 1:50 -   | Rosemont Copper project, Coronado National Forest - Beverley Everson                      |
| 1:50 - 2:20 -   | The Forgotten Silver District - Peck Mining District - Brian Beck                         |
| 2:20 - 2:50 -   | Break, Mineral Silent Auction   |
| 2:50 - 3:20 -   | Minerals of the Mission mine - Bill Williams  |
| 3:20 - 3:50 -   | TBA   |
| 3:50 - 4:20 -   | What's New in Arizona Minerals - Marcus Origlieri, Harvey Jong and Ray Grant              |

## 57<sup>th</sup> Annual Tucson Gem and Mineral Show™

What a glorious weekend! The sun shone brightly on TGMS, the dealers were busy, volunteers performed extraordinarily well, the office supported our every effort, the exhibits, both special and competitive, were gorgeous beyond belief, customers were making purchases and the friendship was outstanding. To each of you who participated, please accept my sincere thank you for a job well done.



collection, a small collection of classic American mineral specimen locations and a faceted Red Cloud wulfenite. I hope each of you also had success.

This past year was one of challenges and change. I do not know what next year will bring but I will serve in whatever capacity may be requested. It has been my pleasure and privilege to serve as Show Chair this past year.

Paul Harter,  
2011 TGMS Show Chairman

This past year the Show Committee has focused on improving the total experience of our annual Show. This effort was well received. Several examples include recognition and acknowledgement that the dealers are our customers. Diane, thank you for taking time and making the effort to spend all of Sunday visiting with the dealers and saying "thank you" for participating. I have received notes from dealers who appreciated the effort. Move-in and setup was improved for a variety of reasons, not the least of which was the effort by Linda Oliver and Arizona Cine to have the Show set early Wednesday morning. The dealers appreciated this effort.

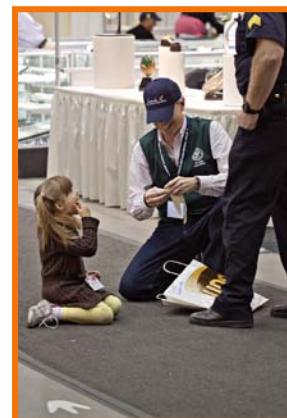
The quality of food was significantly improved. Pat and I worked with TCC and Chef Art Pietrangeli to upgrade the quality of food at both the food court and at the Saturday night banquet. Again, the feedback leads me to believe the effort was appreciated. While I have nothing against a good hamburger or hot dog, the tamales were a pleasant change.

Exhibits! Each of us had an opportunity to see specimens that we may never see again. I am constantly amazed at the level of unselfishness shown by both the individual and institutional exhibitors. Whether the travel is from five miles or five thousand miles, the risk is great, but yet each year people take that risk to share with us their collection. Next year with the centennial of statehood there will be 40+ cases dedicated to mineral specimens and other items from Arizona. Please take time to thank an exhibitor for making the effort and taking the risk to exhibit.

Finally, on to an additional reason so many attend the Show. As my friend Jim Bleess has written, this is the greatest show on earth (no offense to Ringling Bros.) and it is in our backyard. Attend the Show and for heaven's sake add an item to your collection. For those who were on the hunt for an addition to their collection there were many choices. For me I added items to my Tsumeb

57<sup>th</sup> Annual TGMS Show ... CONTINUED

Photos: Ken Don





Opening Ceremony!



Exhibits!  
Exhibits!  
Exhibits!



Lectures!  
Symposiums!



Giveaway Booth!  
"Grand Prize Winner!"



Photos: Ken Don,  
P.R. McClain, D. Leicht



2011  
TGMS  
Show!

We had a total of 135 volunteers and 32 Show Committee members who contributed to our Show this year. Volunteers recorded over 1,676 hours of work (an average of 12 hours per volunteer). Our Show Committee recorded over 1080 hours during show week (an average of 34 hours per person!).

#### THANK YOU TO ALL OUR VOLUNTEERS AT THE 2011 SHOW

Karen Al-Ashkar, Phil Babcock, Skip Barkley, Jean Barkley, Madison Barkley, Bob Barnes, Jerry Behn, Jim Bless, VonCeil Bless, Russell Boggs, Carl Bowlby, Michael Braswell, Phyllis Candee, Mark Candee, Richard Carlson, Patricia Carlson, Bill Carmody, Marvin Chaiken, Marsie Chaiken, David Clement, Denise Collins, Dave Cormier, Janelle Cortright, Robert Crowell, Anna Domitrovic, Philip Dunton, John Ebner, River Elderholly, Erhan Erdem, Martha Erdem, Jim Etwiler, Rusty Etwiler, Clay Farnsworth, Sue Feyrer, Don Feyrer, Edna Fiedler, Marjorie Flagg, Jerry Foley, Eunice Fox, Mitch Fox, Hildreth Garb, John Gaston, Ron Gibbs, Jerry Glazman, Mary Glazman, Patrick Greene, Mary Greene, Danny Harmson, Venice Hawkins, Harry Henze, Andrew Herman, Jackie Holden, Larry Holden, Elaine Hughes, James Hurlbut, Ed Huskinson, Aleta Huskinson, Walter Johnson, Bill Kerr, Carolyn Kerr, James Kline, Imelda Kline, Anita Landess, Yvonne Lind, Robert Lind, Keith Lindholm, Carole Lockhart, George Lueras, Karyl Lynch, Mark Marikos, Christina Marikos, Donna McCabe, Tim McClain, James McGlasson, Pat McMullen, Judy McMullen, Denis Menard, Bob Melzer, Bruce Meyer, Elizabeth Moller, Robert Moore, Florence Moore, Bob Morgan, Barbara Mostoff, Diana Mueller, Ruby Munson, Barbara Muntyan, Richard Nassi, Robert Niedermeier, Bob O'Donnell, Robert Offerle, Lucie Offerle, Wes Osborn, Phil Partington, Ron Pellar, Mary Ann Penkova, Alyce Pennington, Paul Peters, Olivia Peters, Pete Peterson, Virginia Peterson, Fred Pfarrius, Louis Pill, Donna Pugh, Janet Reue, Alan Romey, Elaine Royer, Robert Royer, George Salwaechter, JoAnne Sam, Pat Schaffer, Vera Schlichter, Aniko Selmeczi, Janette Simister, Walter Sipes, Steve Slaff, Eckhard Stuart, Marija Tallet-Kelpsa, Rim Tallet-Kelpsa, Christiane Toft, Kerry Towe, Dennis Tryon, Steve Weibel, Eric Weiland, Carolyn Weinberger, Steve Weinberger, Shirley Wetmore, Bob White, Sugar White, Linda Wilson, Tom Wilson, David Witwer, and Doris Wright.

#### FROM THE SHOW COMMITTEE AND BOARD

Ellen Alexander, Dave Arens, Mark Ascher, Jeannette Barnes, Diane Braswell, Coleen Brown, John Cesar, Connie Clark, Ken Don, Richard Flagg, Richard Gottfried, Carolyn Gray, Paul Harter, Alrene Hibben, Bill Hodgson, John Howard, Nancy Howard, Carol Johnston, Wayne Klement, Rose Marques, Pat McClain, Peter Megaw, Linda Oliver, Les Presmyk, Gloria Quigg, Marilyn Reynolds, Penny Savoie, Ed Schaffer, Gene Schlepp, Jackie Schlepp, Rick Trapp, and Jack Wixon.

### 2011 Tucson Gem and Mineral Show™ Competitive Awards

#### TGMS General Competition

|                         |                 |               |                             |                 |
|-------------------------|-----------------|---------------|-----------------------------|-----------------|
| Kaleigh Brown           | Tucson, AZ      | Junior        | E-1, Educational            | 1st             |
| Aidan Dolby             | Tucson, AZ      | Junior        | B-12, Open 3rd              |                 |
| Gordie Downs            | Tucson, AZ      | Junior        | B-9, Miniatures             | 1st             |
| Clay Downs              | Tucson, AZ      | Junior        | B-12, Open 1st              |                 |
| Mikelle Morris          | Tucson, AZ      | Junior        | E-1, Educational            | 3rd             |
| Alison Richardson       | Phoenix, AZ     | Junior        | B-6, Gypsum                 | 1st             |
| Erica Richardson        | Phoenix, AZ     | Junior-Master | B-7, One Locality, T/N's    | 1st             |
| Madison Barkley         | Tucson, AZ      | Novice        | B-2, Cabinets               | 1st             |
| Brandy Naugle-Zzyzx     | Los Angeles, CA | Novice        | B-11, Thumbnails            | 1st             |
| Chuck Houser            | El Cajon, CA    | Advanced      | B-11, Thumbnails            | 1st             |
| Chuck Houser            | El Cajon, CA    | Advanced      | B-7, One Locality           | 2nd             |
| Robert Morgan           | Savannah, GA    | Advanced      | E-1, Educational            | 1st             |
| Ernest "Ruggy" Holloway | Morgan Hill, CA | Master        | E-1, Educational            | 3rd             |
| Brett Keller            | Angels Camp, CA | Master        | B-12, Open 2nd              |                 |
| Lauren Megaw            | Tucson, AZ      | Master        | B-12, Open 2nd              |                 |
| Phil Richardson         | Phoenix, AZ     | Master        | B-6, Thumbnails-One Species | 2 <sup>nd</sup> |

#### Best of Theme

|                 |               |               |                  |
|-----------------|---------------|---------------|------------------|
| Irv Brown       | San Diego, CA | Best of Theme | Thumbnail        |
| Jim Bless       | Tucson, AZ    | Best of Theme | Toenail          |
| Ed Huskinson    | Kingman, AZ   | Best of Theme | Miniature        |
| Wally Mann      | Dallas, TX    | Best of Theme | Small Cabinet    |
| Thacker Robert  | Houston, TX   | Best of Theme | Cabinet          |
| Aleta Huskinson | Kingman, AZ   | Best of Theme | Lapidary/Jewelry |

#### Trophies

|                     |                 |                    |
|---------------------|-----------------|--------------------|
| Lauren Megaw        | Tucson, AZ      | Lidstrom           |
| Lauren Megaw        | Tucson, AZ      | Desautails         |
| Si and Ann Frazier  | El Cerrito, CA  | Bideaux            |
| Peter Megaw         | Tucson, AZ      | Romero             |
| Alison Richardson   | Phoenix, AZ     | Best Junior        |
| Erica Richardson    | Phoenix, AZ     | Best Junior-Master |
| Brandy Naugle-Zzyzx | Los Angeles, CA | Best Novice        |
| Robert Morgan       | Savannah, GA    | Best Advanced      |

TGMS General Meetings are open to the general public. All other meetings/events are for TGMS Members only.

| TGMS Calendar |  |         |   |          |        |   |
|---------------|--|---------|---|----------|--------|---|
| March 2011    |  |         |   |          |        |   |
| Sunday        | Monday   | Tuesday | Wednesday                                     | Thursday | Friday | Saturday  |
|               |  | 1       | 2   | 3        | 4      | 5   |
| 6             | 7<br>TGMS General Meeting<br>7:30 p.m.                     | 8       | 9<br>TGMS Show Committee Meeting<br>6:30 p.m. | 10       | 11     | 12  |
| 13            | 14<br>TGMS Micromount Meeting at the U. of A.<br>7:00 p.m. | 15      | 16  | 17       | 18     | 19  |
| 20            | 21   | 22      | 23  | 24       | 25     | 26<br>19 <sup>th</sup> Minerals of Arizona Symposium at ASDM - Tucson |
| 27            | 28   | 29      | 30  | 31       |        |   |
|               |  |         |   |          |        |   |

Unless otherwise stated ... all meetings are held at the Tucson Gem and Mineral Society facility.  
Located at: 3727 E. Blacklidge, Tucson, Arizona 85716



## APRIL

General Meeting  
Monday, April 4, 2011  
7:30 p.m.

Micromount Meeting  
Monday, April 11, 2011  
7:00 p.m.

## CALENDAR OF SHOWS

### MARCH

**11-13 - COTTONWOOD, ARIZONA:** Show, "Verde Valley Gem Mineral & Jewelry Show"; Mingus Gem & Mineral Club; Verde Valley Fairgrounds, 800 E. Cherry St.; Fri. 9-5, Sat. 9-5, Sun. 10-4; adults \$2, children 13 and under free with paying adult; more than 30 vendors, door prize raffles, educational displays, extensive children's area; contact Sarah Knowles, P.O. Box 1284, Cottonwood, AZ 86326; e-mail: [Mingusgemandmineralclub@gmail.com](mailto:Mingusgemandmineralclub@gmail.com)

**11-14 - DEMING, NEW MEXICO:** 46th annual show, "Rockhound Roundup Gem & Mineral Show"; Deming Gem & Mineral Society; SWNM State Fairgrounds, Raymond Reed Blvd.; free admission; more than 100 dealers, display cases, geode cutting, gold panning, spinning wheel, silent and live auctions, door prizes, raffle, guided field trips; contact Terry Dellinger, P.O. Box 1459, Deming, NM 88031, (936) 433-0108; e-mail: [theDGMS@gmail.com](mailto:theDGMS@gmail.com); Web site: [www.dgms.bravehost.com](http://www.dgms.bravehost.com)

**18-20 - ALBUQUERQUE, NEW MEXICO:** 42nd

annual show, Treasures of the Earth"; Albuquerque Gem & Mineral Club; Creative Arts Center Bldg., State Fair Grounds, EXPO NM (San Pedro entrance); Fri. 10-6, Sat. 10-6, Sun. 10-5; adults \$1 Fri., \$3 Sat. and Sun., kids 12 and under free; more than 40 dealers, displays, door prizes, silent auctions, mineral and gem identification, juniors' booth, live wolf, geode cracking, faceting demonstration, gold panning and more; contact Paul Hlava, (505) 255-5478; e-mail: [paulhlava@q.com](mailto:paulhlava@q.com)

### APRIL

**9-10 - KINGMAN, ARIZONA:** Show and sale; Mohave County Gemstoners; Kingman Academy of Learning, 3420 N Burbank; Sat. 9-5, Sun. 9-4; free admission; rough rock, slabs, cabs, jewelry, wire wrapping, silver and gold smithing, lapidary and jewelry fabrication equipment and supplies, demonstrations, raffles, prizes, children's activities, educational information, displays, crafts, fossils, minerals, silent auction, door prizes, cash raffle prizes; contact Mary Gann, PO Box 3992, Kingman, AZ 86402; e-mail: [quadpol@aol.com](mailto:quadpol@aol.com); Web site: [www.gemstoners.org](http://www.gemstoners.org)

**FROM:**

**T.G.M.S.  
P.O. BOX 42588  
TUCSON, ARIZONA 85733**

# ROCK TALK



**TO:**

**Tucson Gem and Mineral Society, Inc.**

**PURPOSE:** To encourage interest and study in geology, mineralogy, lapidary, and allied earth sciences.

**Meetings:** Usually the first Monday of the month, starting at 7:30 p.m., except February (On Monday, week of the Show), June-August (potlucks), and September (second Monday because of the Labor Day holiday.)

**The Tucson Gem and Mineral Show™:**

The second full weekend in February.

**Affiliations:** American Federation of Mineralogical Societies, Inc. (AFMS), Rocky Mountain Federation of Mineralogical Societies (RMFMS), International Federation of Micromount Societies (IFMS), Metropolitan Tucson Convention & Visitors Bureau (MTCVB), Tucson Metropolitan Chamber of Commerce (TMCC)